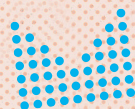




AID  PLACE
CZECH

2020



MINISTRY OF THE INTERIOR
OF THE CZECH REPUBLIC

AID IN PLACE IN THE YEAR 2020

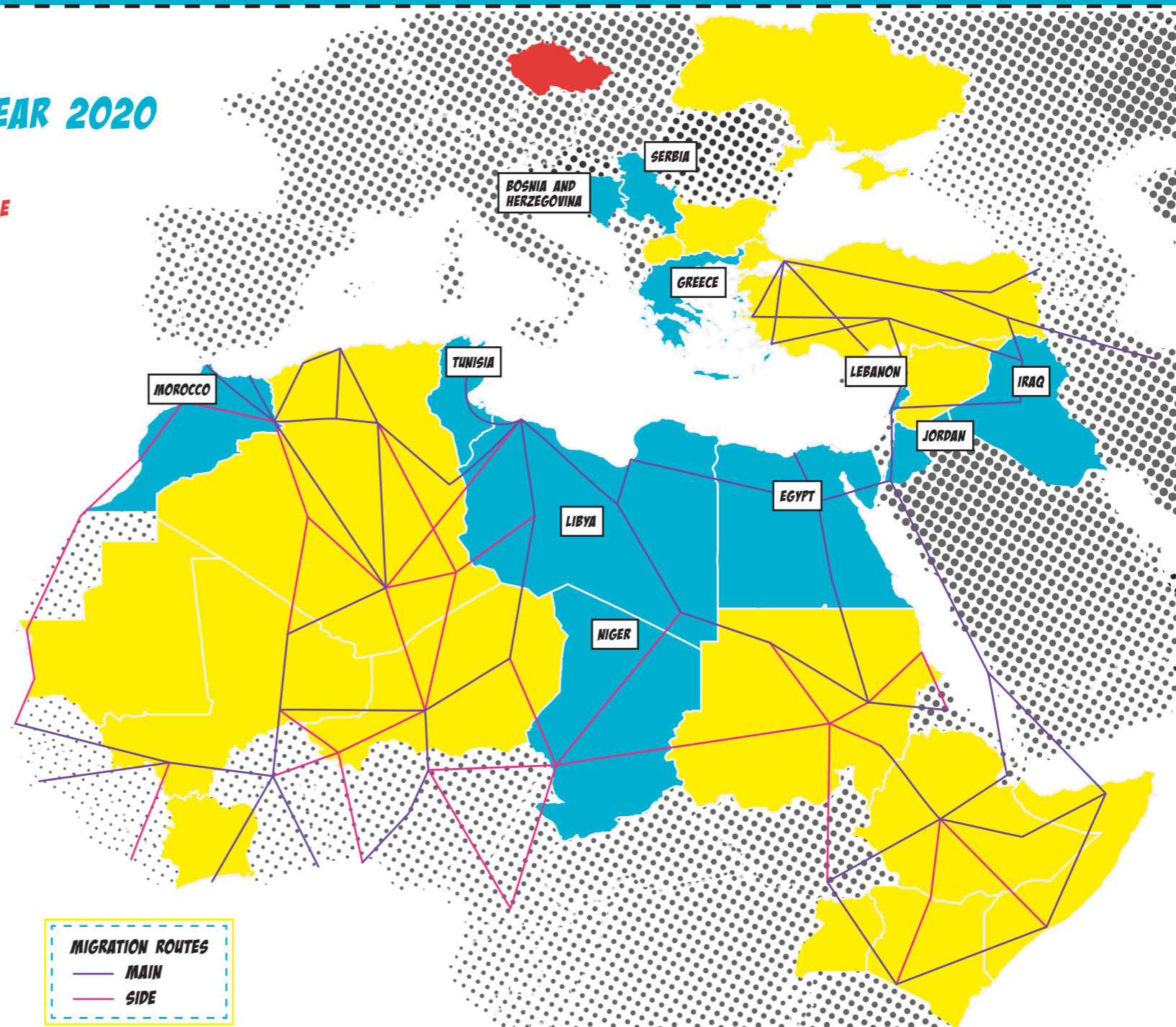
IN THE YEARS 2015-2019 THE PROGRAMME WAS PRESENT ALSO IN THESE COUNTRIES:

Bilateral cooperation:

Bulgaria
Chad
Mali
Ivory Coast
North Macedonia
Syria
Turkey
Ukraine

Multilateral cooperation:

Algeria
Ethiopia
Kenya
Mauritania
Somalia
Sudan
Uganda



Since 2015 the Aid in Place Programme of the Czech Ministry of the Interior has been providing assistance to “people on the move” – to refugees, migrants, internally displaced persons and persons who wish to return to their home country after displacement.

Through its projects, the Ministry of the Interior intends to help these people find a permanent solution, specifically by creating the best conditions possible on site, helping them return to their home country or integrating them in the host country.

A WORD OF INTRODUCTION

FROM THE DIRECTOR OF THE DEPARTMENT FOR ASYLUM AND MIGRATION POLICY

Dear Readers,

You are holding an annual report for the year 2020 of the Ministry of the Interior Aid in Place Programme. This year was dominated by combating the COVID-19 pandemic, but debates concerning the new approach towards the common European asylum and migration system were likewise launched. However, it is still evident that the external dimension of migration, in other words activities taking place in refugees' and migrants' countries of origin and transit, will play an ever more crucial role in the European approach.

Outside the Czech Republic, the Ministry of the Interior has been contributing to solution of the plight of refugees, migrants and other displaced persons through two programmes – Aid in Place and MEDEVAC – already since 2015. This means that activities in the external dimension are nothing new for us, but quite the opposite. Over more than five years, we have managed to establish many successful relations with our partners and to help thousands of people on the move far beyond the borders of our country. And we intend to continue in the efforts that we have begun.

The COVID-19 pandemic was an immense complication for the implementation of many of our projects. But it also moved all of us forward in some way and taught us new methods and approaches to our work. This enabled successful implementation of all projects under the Aid in Place Programme in 2020, despite everything. Therefore we owe great thanks to our partners for their flexibility and efforts in adapting to the new situation. We look forward to close cooperation also in 2021.

Mgr. Payla Novotná



INTRODUCTION

The Ministry of the Interior Aid in Place Programme (full title: The Programme of the Ministry of the Interior for the Assistance to Refugees in Regions of Origin and Prevention of Large Migration Flows) has been helping “people on the move” – in other words refugees, migrants, internally displaced persons and persons returning to their homeland after displacement – since 2015. The Ministry of the Interior wishes to find a permanent solution for these people by means of dedicated projects, which means creating the best possible conditions in their place of origin, helping them to return to their homelands or integrating them in a neighbouring host country. An important element of the Aid in Place Programme is combating illegal migration and therefore also migrant smugglers and human traffickers. For this reason, we help countries along the main migration routes to bolster their migration systems to enable them confront and prevent illegal migration and smuggling.

Projects financed under this programme are implemented in partnership with individual foreign governments, international organisations and international non-governmental organisations. During 2020, the Ministry of the Interior collaborated under the programme with five foreign partners, three of which were new partners, namely the European Asylum Support Office (EASO), the World Food Programme (WFP) and the International Organisation for Migration (IOM).

The Aid in Place budget for 2020 totalled CZK 135 million (EUR 5.4 million), which made it possible to provide financial support to seven projects and also one humanitarian material donation. Another material donation over and above this budget was made to facilitate urgent aid to refugees and migrants in Bosnia and Herzegovina. The aid was financed from the Department for Asylum and Migration Policy budget and implemented by the Aid in Place Programme. In 2020, projects were conducted in two priority areas: the Balkans and the Middle East region and North Africa (known as the MENA region). Priority regions and their order of priority were determined

PREVENTION OF ILLEGAL MIGRATION

PROTECTION OF VULNERABLE PERSONS

**SUPPORTING ASYLUM
AND MIGRATION SYSTEMS**

on the basis of the migration and refugee situation in the vicinity of the European Union and related migration pressure on the EU and the Czech Republic in the preceding year. We also coordinated Aid in Place projects with the recently launched Ministry of Foreign Affairs Programme of Activities for Supporting Migration Source and Transit Countries in Africa for 2020 – 2022.

Understandably, the implementation of the programme in 2020 was influenced to a great extent by the COVID-19 pandemic, which began affecting the course of events all over the world in the first quarter of the year. The pandemic and the resulting epidemiological measures taken by most countries of the world had an immense impact on the most vulnerable groups of people, which also includes refugees, migrants and internally displaced persons. Several projects supported by the Aid in Place Programme in 2020 focused on reducing the negative impacts of the pandemic on these categories of people. At the same time, certain partners whose projects were supported by Aid in Place in the previous year adjusted the activities and budgets of their projects in connection with the pandemic in order to be able to likewise react appropriately to the situation. As in previous years, cooperation and close links between Aid in Place and its sister medical humanitarian programme MEDEVAC also continued in 2020.



ACTIVITIES IMPLEMENTED IN 2020

SUPPORTING HIGHER EDUCATION FOR SYRIAN REFUGEES (UNHCR)

JORDAN
CZK 25 MIL.
EUR 1 MIL.

SUPPORTING THE ASYLUM SYSTEMS OF THE NORTH AFRICAN COUNTRIES (EASO)

EGYPT, NIGER, MOROCCO, TUNISIA
CZK 15 MIL.
EUR 600K

REINFORCING BORDER PROTECTION AND PREVENTION OF ILLEGAL MIGRATION (GREEK MINISTRY OF CITIZEN PROTECTION)

GREECE
CZK 27 MIL.
EUR 1,08 MIL.

SUPPORTING SYRIAN REFUGEES DURING THE COVID-19 PANDEMIC (UNHCR)

LEBANON
CZK 10 MIL.
EUR 400K

SERBIA
CZK 20 MIL.
EUR 800K

MATERIAL AID FOR SOLVING THE EXISTING MIGRATION SITUATION (GREEK MINISTRY OF CITIZEN PROTECTION)

GREECE
CZK 2,7 MIL.
EUR 108K

SUPPORTING REFUGEE ACCESS TO ASYLUM PROCEDURE AND INTEGRATION MEASURES DURING THE COVID-19 PANDEMIC (UNHCR)

BOSNIA AND HERZEGOVINA
CZK 2,8 MIL.
EUR 108K

STABILISATION OF MIGRANTS AND REINFORCING CAPACITIES AT BORDER CROSSINGS DURING THE COVID-19 PANDEMIC (IOM)

IRAQ AND JORDAN
CZK 25 MIL.
EUR 1 MIL.

HUMANITARIAN MATERIAL AID FOR SOLVING THE EXISTING MIGRATION SITUATION (BOSNIA AND HERZEGOVINA RED CROSS)

LIBYA
CZK 10 MIL.
EUR 400K

SUPPORTING THE CREATION OF JOB OPPORTUNITIES ALONG MIGRATION ROUTES (WFP)

AID IN PLACE **IN THE YEAR OF THE PANDEMIC**

At the beginning of 2020, the majority of countries around the world were hit by the COVID-19 pandemic. The subsequent gradual introduction of restrictive epidemiological measures impacted most of the inhabitants of our planet. In consequence of the closure of certain segments of the economy, many people lost their source of income, either from their job or from their business. These measures most affected the world's poorest and most vulnerable groups of people, which also include refugees, migrants and internally displaced persons. Such people often have minimal or no financial savings, so losing their wages for just one month can have catastrophic consequences. This usually plunges them into even greater poverty and causes them to consider migration to a country more successful in combating the pandemic and which offers better job opportunities.

The pandemic also brought with it increased demands on personal hygiene. Establishing and achieving compliance with hygiene measures has become a great challenge especially for densely populated refugee camps where often thousands of people live in a small compound. An example of this is the Zaatari refugee camp in Jordan where more than 76,000 inhabitants were living in 2020. Refugees, more than ever before, lack the means to buy hygiene items due to frequent loss of income.

The global situation in 2020 has made the implementation of many projects significantly more difficult. Organisations providing humanitarian and development aid have had to adapt to unforeseen circumstances and modify their ongoing projects in a flexible

way. Moreover, many of them promptly responded and offered the necessary support to the most vulnerable persons in reaction to the challenges brought by the pandemic. Refugees and members of host communities often provided aid themselves and helped each other. The pandemic has created new heroes.

Aid in Place also attempted to react to the challenges of the COVID-19 pandemic. In the course of 2020 it supported three projects targeted at assisting refugees and migrants during the pandemic. These were namely a joint project with the International Organisation for Migration (IOM) in Iraq and Jordan and projects with the Office of the United Nations High Commissioner for Refugees (UNHCR) in Lebanon and in Serbia. Also, a long-term partner of Aid in Place – the Lutheran World Federation (LWF) – got involved in help and, in cooperation with the United Nations Children's Fund (UNICEF), supported Syrian families in Zaatari refugee camp in Jordan. In agreement with the Ministry of the Interior, funds were provided from finances that had been earmarked for the organisation by the Aid in Place Programme in 2019, but were yet unused. LWF has been helping in the camp for several years now, mainly by supporting the livelihoods of Syrian refugees whom Aid in Place has also been supporting for some time. With finances saved from the project and from donations from small donors in the Fast Collection in the Czech Republic, LWF was able to buy enough hygiene packages with soap, disinfectant and washing powder for 5 000 Syrian families.



© LWF (ALL THE PHOTOS)



THE DISTRIBUTION OF HYGIENE PACKAGES IN THE ZAATARI REFUGEE CAMP IN JORDAN HAS STARTED. HURRY UP!



THE BALKANS

The first geographical priority of the Aid in Place Programme was, similarly as in previous years, the Balkans, where the Ministry of the Interior has long been active, for instance by deploying police officers on missions in order to help local authorities with border protection.

The region comprising the Western Balkans and South-Eastern Europe has been a major migration route to the EU for many years, primarily starting in the Middle East and then continuing towards (Western and Northern) Europe, via the Eastern Mediterranean and Western Balkans migration route. In 2019, the Eastern Mediterranean and Western Balkans migration route experienced a rise of 53 % as against the previous year, making it the most frequented migration route to the European Union. Migrants continue on from Greece, most often via North Macedonia or Albania and then on through Serbia, Montenegro and Bosnia and Herzegovina. Migrants generally just transit these countries, while their target destination tends to be the countries of the Schengen Area, attempting to enter them either

by themselves or with the help of migrant smugglers. At the end of 2019, Bosnia and Herzegovina was a temporary home to almost 8 000 migrants dwelling in unsuitable living conditions. Cooperation with the Western Balkan countries is essential for the Czech Republic and for the entire European Union, not only in terms of border protection and combating illegal migration, including migrant smuggling and human trafficking, but primarily with an aim to reinforcing the area of asylum policy and integration and also with the issue of effective returns.

Thus for 2020, the priority countries for Aid in Place in this region were once again Bosnia and Herzegovina, North Macedonia and Serbia. Due to escalation of the situation on the Greek border at the beginning of the year, specifically around the land border with Turkey formed by the Evros river, the Czech Republic, as well as other European states, was forced to react quickly and offer Greece assistance in handling this security and humanitarian situation threatening stability on the Eastern Mediterranean route.





MIGRANTS ARE ON THEIR JOURNEY THROUGH THE WESTERN BALKANS MIGRATORY ROUTE.

© UNHCR (PHOTO: IGOR PAVICEVIC)



BOSNIA AND HERZEGOVINA

HUMANITARIAN MATERIAL AID IN CONNECTION WITH SOLVING THE EXISTING MIGRATION SITUATION



AMOUNT ALLOCATED: CZK 2.5 MILLION (EUR 100 000)
IMPLEMENTING PARTNER: BOSNIA AND HERZEGOVINA RED CROSS
IMPLEMENTATION DATE: JANUARY 2020

Project description:

In January 2020, almost 8 000 refugees and migrants were present in the territory of Bosnia and Herzegovina. Almost half of them were not housed in the accommodation centres run by the government and international organisations. As winter began, these people found themselves in a very precarious situation. This led the Bosnian government to request humanitarian aid from the Czech Republic, specifically the provision of 2 000 sleeping bags, 2 000 blankets, 2 000 raincoats and 500 cooking and dining sets, for refugees and migrants living outside accommodation centres. The Czech Republic provided the requested aid using surplus of the Fire Rescue Service of the Czech Republic funded by the Aid in Place Programme.

State of implementation:

The Fire Rescue Service of the Czech Republic was responsible for the organisation and delivery of the humanitarian shipment to Bosnia and Herzegovina. Four of their trucks were used for transporting the goods to Sarajevo. The humanitarian aid was handed over to representatives of the Bosnia and Herzegovina Red Cross on 14 January 2020, and it was then distributed mainly in the cantons of Tuzla and Una-Sana where the majority of persons with no shelter were staying in disastrous conditions.



ACTION! THE FIRE RESCUE SERVICE OF THE CZECH REPUBLIC HAS DEPARTED FOR BOSNIA AND HERZEGOVINA LOADED WITH HUMANITARIAN AID.

© MOI (BOTH PHOTOS)

SLEEPING BAGS, WHICH WERE AMONG OTHER THINGS REQUESTED BY OUR BOSNIAN PARTNERS, ARE READY FOR THE SHIPMENT.

SERBIA

SUPPORTING REFUGEE ACCESS TO ASYLUM PROCEDURES AND INTEGRATION MEASURES DURING THE COVID-19 PANDEMIC



AMOUNT ALLOCATED: CZK 20 MILLION (EUR 800 000)

IMPLEMENTING PARTNER: OFFICE OF THE UN HIGH COMMISSIONER FOR REFUGEES (UNHCR)

IMPLEMENTATION PERIOD: JANUARY - DECEMBER 2020

Project description:

Serbia is one of the transit countries on the Western Balkans migration route to the European Union. During 2018 and 2019, improvements were reported in Serbia in the access to asylum procedures and integration measures to persons with a right to international protection. The Serbian authorities managed to achieve higher quality and speedier implementation of their new asylum and temporary protection law. This positive trend should be encouraged in order to allow Serbia to be a country of asylum and integration, rather than merely a transit country. Of all of the Western Balkan countries, Serbia is making the greatest progress in terms of asylum policy and offers an alternative to refugees within its own country.

UNHCR compiled a project proposal intended to facilitate better access to asylum procedures and integration measures in Serbia in times of increased hygiene measures and in a situation where Serbia is still recovering from the consequences of the coronavirus pandemic.

State of implementation:

Almost 5 000 refugees were provided free legal aid and advice and 600 unaccompanied minors were given necessary assistance under the project. 150 persons who were granted international protection in Serbia also received a contribution towards housing and other integration assistance. Activities under the project included border monitoring and increasing capacities both of the Serbian Interior Ministry and the Asylum Office. The project was completed in December 2020.



GREECE

MATERIAL AID IN CONNECTION WITH SOLVING THE EXISTING MIGRATION SITUATION



AMOUNT ALLOCATED: CZK 2.7 MILLION (EUR 108 000)

IMPLEMENTING PARTNER: MINISTRY OF CITIZEN PROTECTION OF THE HELLENIC REPUBLIC

IMPLEMENTATION DATE: MARCH 2020



Project description:

Due to the large influx of migrants arriving from Turkey across the land border with Greece formed by the Evros river, Greece requested material aid from EU member states via the EU Civil Protection Mechanism. Greece expressed interest primarily in equipment for accommodation, hygiene and health care for incoming migrants. After reviewing its own stockpile, the Czech Republic offered Greece a shipment of mattresses, sleeping bags, blankets, electric generators, pumps, towels, wellington boots, raincoats etc. from the Fire Rescue Service of the Czech Republic stockpile, financed by Aid in Place.

State of implementation:

The humanitarian shipment was organised and transported by the Fire Rescue Service of the Czech Republic using 5 trucks. The material aid was handed over in Athens to representatives of the Ministry of Citizen Protection of the Hellenic Republic, who then organised its subsequent distribution to migrant accommodation centres.

GREECE

REINFORCING BORDER PROTECTION AND PREVENTION OF ILLEGAL MIGRATION

AMOUNT ALLOCATED: CZK 27 MILLION (EUR 1.08 MILLION)

IMPLEMENTING PARTNER: MINISTRY OF CITIZEN PROTECTION OF THE HELLENIC REPUBLIC

IMPLEMENTATION PERIOD: AUGUST 2020 - AUGUST 2022



Project description:

In March 2020, the Czech Republic was among the first European Union member states to send material aid to Greece in response to increased pressure on the Turkey-Greece land border which intensified in February and March 2020. Simultaneously, at a meeting of the Council of Ministers of the EU countries at the beginning of March 2020, the Minister of the Interior, Jan Hamáček, offered subsequent concrete financial aid to support border protection and prevention of illegal migration. Once the Ministry of Citizen Protection of the Hellenic Republic specified its needs, the Ministry of the Interior granted Greece a financial donation of CZK 27 million (EUR 1.08 million) for the purchase of technical equipment and reinforcing the capacities of border police in the form of specialised training.

State of implementation:

Following the receipt of the financial donation, the Ministry of Citizen Protection of the Hellenic Republic went on to purchase patrol vehicles, boats, inflatable dinghies, thermal imaging cameras, night vision equipment and telecommunications technologies needed for effective protection of the EU's external borders. Implementation of the project is planned to continue until August 2022.

MINISTER OF THE INTERIOR, JAN HAMÁČEK, AND THE GREEK AMBASSADOR TO THE CZECH REPUBLIC, EFTHYMIOS EFTHYMIADES, DULY SIGN THE MEMORANDUM OF UNDERSTANDING OF THE FINANCIAL DONATION.



THE MIDDLE EAST AND NORTH AFRICA

The second geographical priority of the Aid in Place Programme for 2020 was the region known as MENA, in other words the Middle East and North Africa. This region is one of the main sources and transit areas of migration to Europe. Many countries in this region are currently hosting huge numbers of migrants and refugees in their territory. For example, at the end of 2019, more than 950 000 displaced persons were present in Libya, the highest number in the whole of North Africa. In consequence of the long-raging conflict in Syria, countries in the Middle East are currently hosting high numbers of refugees, only a very few of whom have decided for voluntary return to Syria. On the contrary, the Turkish offensive of October 2019 drove another 200 000 out of their homes and another 17 000 to neighbouring Iraq. According to UNHCR data, at the end of 2019 a total of 5.6 million Syrians were living in neighbouring countries. The largest group of Syrian refugees are being hosted by Turkey (3.6 mil.), then in Lebanon (947 000), Jordan (655 000), Iraq (244 000) and Egypt (130 000). This situation has led and continues to lead to unprecedented pressure on these countries, their infrastructure

and the stability of local communities. The capability of these countries to provide refugees sufficient protection and dignified treatment are extremely limited, which leads to heightened frustration among both local inhabitants and refugees, who are then forced to seek protection and job opportunities in other countries including European countries. For instance, 83 % of Syrian refugees in Jordan live outside refugee camps, well below the poverty line. Education is a massive challenge, especially higher education for Syrian children who, having completed their primary education, have no job opportunities or hopes for the future in Jordan.

The priority country in the MENA region for the Aid in Place Programme is Jordan, where the Czech Republic has implemented numerous successful projects for assisting Syrian refugees in recent years. As for the North Africa region, Libya is the priority, with large numbers of displaced persons and the currently raging conflict being a push factor for migration on to Europe.



© IOM

HERE WE GO! THE COMPUTERS FOR JORDANIAN BORDER CROSSING POINTS ARE BEING HANDED OVER.



© UNHCR

HELLO, I AM KENAN FROM SYRIA AND THANKS TO DAFI I AM TAKING A DEGREE IN MEDIA STUDIES IN JORDAN.



HI, I AM ESRAA FROM SYRIA AND I WAS ABLE TO GET MY BACHELOR'S DEGREE IN COMPUTER ENGINEERING IN JORDAN THANKS TO DAFI.

© UNHCR (FOTO: LILLY CARLISLIE)



© UNHCR (PHOTO: SHAWKAT ALHARFOSH)

A SYRIAN GIRL WITH HER FATHER IS DRIVING THROUGH THE STREETS OF THE ZAATARI REFUGEE CAMP.

JORDAN, IRAQ

STABILISATION OF MIGRANTS AND REINFORCING CAPACITIES AT BORDER CROSSINGS IN CONNECTION WITH THE COVID-19 PANDEMIC



AMOUNT ALLOCATED: CZK 25 MILLION (EUR 1 MILLION)

IMPLEMENTING PARTNER: INTERNATIONAL ORGANISATION FOR MIGRATION (IOM)

IMPLEMENTATION PERIOD: NOVEMBER 2020 - OCTOBER 2021

Project description:

In reaction to the deteriorating situation of refugees and migrants in Jordan and Iraq and the new challenge in the form of the COVID-19 pandemic, Aid in Place granted a financial donation to the IOM for the implementation of a suitable project in these countries. The governments of both states are largely dependent on aid from the international community for handling the pandemic. For this reason, in February 2020, the IOM sent out an appeal for help in handling migration matters in relation to the COVID-19 pandemic around the world that would total USD 499 million. Jordan's financial needs were estimated to be USD 4.5 million, while Iraq required USD 20.45 million.

The aim of the project in Iraq is stabilisation of migrants in Iraq and potentially their return to their country of origin. Support is targeted at the most vulnerable of them, victims of human trafficking, which is a very real problem in Iraq where, due to loss of income, people find themselves in an extremely unstable situation. The help needed involves provision of information, legal assistance, financial assistance, assistance in voluntary returns, but also distribution of basic hygiene packages. The project in Jordan is aimed at reinforcing the capacities at Jordanian border crossing points with an emphasis on increased hygiene measures connected with the COVID-19 pandemic. Specifically, this means reinforcement of infrastructure, data collection and hygiene and healthcare materials at border crossings for safer migration

management after the opening of the Jordanian borders. The financial donation is divided half and half between activities in Iraq and Jordan.

State of implementation:

During the first six months of the implementation, IOM in Iraq worked closely with the Iraqi governmental authorities, embassies of key countries of origin of migrants and non-governmental organisations to identify, assist or return migrants and victims of trafficking, who were most affected by the COVID-19 pandemic. During this time, IOM, in collaboration with partners, identified and provided support to a total of 30 migrants and victims of trafficking (7 men and 23 women). The assistance consisted of providing direct support in the form of food, clothing, blankets and hygiene packages, as well as legal assistance, health care and pre-departure assistance in returning to the country of origin. By the end of the project, another 120 vulnerable people will be supported.

In Jordan, three major border crossings have been identified to strengthen their capacities in relation to COVID-19. The needs at these crossings have been assessed to ensure safe migration management. The first equipment in the form of computers has already been delivered, the supply of additional equipment and staff training will continue in the second half of the implementation period, which will continue until October 2021.

JORDAN

SUPPORTING HIGHER EDUCATION FOR SYRIAN REFUGEES



AMOUNT ALLOCATED: CZK 25 MILLION (EUR 1 MILLION)

IMPLEMENTING PARTNER: OFFICE OF THE UN HIGH COMMISSIONER FOR REFUGEES (UNHCR)

IMPLEMENTATION PERIOD: NOVEMBER 2020 - OCTOBER 2021

Project description:

The vast majority of Syrian refugees (around 85 %) living in Jordan are below the national poverty line. That is why, without the help of donors, education is unattainable for most refugees. And also, after the nine years of war in Syria, many Syrian children have completed primary or secondary school and so have to decide what to do next. According to UNHCR, only 5 % of these children currently have access to higher education. The greatest obstacle is financial, because Syrian refugees have to pay the same fees for higher education as any other foreign student, and not the fee that applies to local inhabitants. Access to education for refugee children has become even more difficult with the onset of the coronavirus crisis. Due to this situation, at the beginning of the new school year in September 2020, UNHCR issued another call for donations to support refugee education.

UNHCR administrates the DAFI programme (Albert Einstein German Refugee Academic Initiative), which is aimed at facilitating access to education for young refugees in Jordan and 53 other countries around the world by means of student grants. The grants provided cover study fees, study materials, food, accommodation and transportation. Under the programme, language and other training courses are also offered to grant recipients. The DAFI programme has been operating in Jordan since 2008. 1,631 Syrian students applied for a DAFI grant in 2019, but due to budget limitations, grants could be provided

to just 40 students. The financial donation provided by the Czech Republic in 2020 made it possible to provide a grant for study at higher education colleges and universities to a further 143 Syrian students.

State of implementation:

The donation from Aid in Place enabled a total of 76 female and 67 male students to study in the academic year 2020/2021. The main fields of study were medicine, mechanical engineering, information technology and pedagogical fields. The main challenge in 2020 was the Covid-19 pandemic. At the beginning of 2020, all higher education students in Jordan had to move over to distance education, as was also the case in the Czech Republic. The UNHCR's implementing partner for the DAFI programme in Jordan, the Noor Al Hussein Foundation (NHF), provides students assistance in online study at the beginning and for the entire academic year. Despite coronavirus measures, in addition to their study programme students were given the chance to take other online courses (language, IT, personal development courses) and they also participated in volunteer activities helping other refugees, mainly helping children in refugee camps with their distance education. In addition to this, NHF provides each student advice in other areas of student and personal life with the aim of preventing problems that might result in premature termination of study.



© UNHCR (PHOTO: DAVID AZIA)



AN UNHCR OFFICER IS THOROUGHLY IDENTIFYING THE NEEDS OF THIS SYRIAN WOMAN AND HER THREE CHILDREN

© UNHCR (PHOTO: IVOR PRICKETT)



A DOCTOR TREATING THE WOUNDED HAND OF A YOUNG SYRIAN BOY IN TRIPOLI.

A SYRIAN BOY WITH HEARING AND SPEECH IMPAIRMENT IS BEING TREATED AT THE LOCAL HOSPITAL



© UNHCR (PHOTO: SAM TARGLING)

© UNHCR (PHOTO: DALAL HARB)



THERE ARE NEW BEDS FOR PATIENTS SUFFERING FROM COVID-19 IN ABDALLAH EL RASSIVE HOSPITAL IN THE CITY OF HALBA.

LEBANON

SUPPORTING SYRIAN REFUGEES IN CONNECTION WITH THE COVID-19 PANDEMIC



AMOUNT ALLOCATED: CZK 10 MILLION (EUR 400 000)

IMPLEMENTING PARTNER: OFFICE OF THE UN HIGH COMMISSIONER FOR REFUGEES (UNHCR)

IMPLEMENTATION: JANUARY - DECEMBER 2020

Project description:

Lebanon has recently been facing numerous simultaneous crises (political, economic and coronavirus) which have destructive economic and social impacts on Lebanese citizens as well as on refugees living in the country. Measures intended to eliminate infection with COVID-19 result in loss of income and increased poverty for many refugee and Lebanese families. According to UNHCR, 73 % of Syrian families in Lebanon live below the poverty line and 55 % of them even below the extreme poverty line. A problem for many Syrian families is therefore day-to-day catering for their living needs, including health care. In view of the fact that ever-deepening poverty and social inequality are often reasons for migration to different countries, it is currently important to support the Syrian community in Lebanon and stabilize it in the region.

UNHCR is the main organisation providing assistance to Syrians and it is trying to create conditions for them to lead a dignified life in the host country, in turn efficiently reducing their need for further migration. Since the beginning of the coronavirus crisis, UNHCR has been assisting the Lebanese government to increase the capacity of the healthcare system in the area of prevention and testing for COVID-19, as well as increasing hospital capacities, especially the number of beds in intensive

care units. For the Aid in Place Programme, UNHCR designed a project reacting to the need for increased COVID-19 testing of refugees living in overpopulated areas and increasing hospital capacities of the Lebanese healthcare system so that not just Lebanese citizens, but also members of the refugee community may be hospitalised sufficiently soon.

State of implementation:

As part of the project, 800 hospital beds were purchased, plus 100 beds equipped for use in intensive care units in Lebanese hospitals. Also RT-PCR tests for COVID-19 for refugees were paid for and urgent medical care was provided to 440 persons of the most vulnerable groups, mostly women and children. Implementation of the project finished in December 2020.

LIBYA

SUPPORTING THE CREATION OF JOB OPPORTUNITIES ALONG MIGRATION ROUTES

AMOUNT ALLOCATED: CZK 10 MILLION (EUR 400 000)
IMPLEMENTING PARTNER: WORLD FOOD PROGRAMME (WFP)
IMPLEMENTATION PERIOD: NOVEMBER 2020 - OCTOBER 2021



Project description:

Towards the end of 2019, more than 950 000 refugees, migrants and internally displaced persons were present in Libya. Some of them continue on to Europe, but the vast majority of them remain for the time being in Libya. According to IOM statistics, many migrants try to find work in Libya in order to send their wages back to their homelands. Unfortunately, in consequence of the COVID-19 pandemic, up to 68 % of displaced persons have lost their jobs or other source of income. Most of these people had been working in agriculture or construction.

It is WFP that is reacting to this loss of job opportunities for refugees, migrants and internally displaced persons. The aim of the project, supported by Aid in Place, is to maintain and encourage the creation of job opportunities along migration routes in Libya, specifically a region in the south-west of the country, Fezzan. WFP activities include the training of selected persons in the fields of agriculture, construction and maintenance, but also the overall reinforcement of sustainability of the agricultural sector by employing innovative agricultural techniques and primarily by creating new job opportunities.

State of implementation:

By the beginning of 2021, a total of 847 persons (men and women, both local inhabitants and migrants) are participating in specialised training courses. The reward for participation is a basic food package for participants and their families. The training courses include skills such as cookery, sewing, vehicle repair and other fields according to the interests of the applicants and subsequent opportunities for finding employment with such skills in the local job market. At the same time, at the beginning of the year, five working groups comprising 404 local farmers and experts in the field of agriculture were created under this project. Other activities conducted under the project include training for small-scale farmers in innovative farming methods, e.g. in the area of animal feed and increased vegetable farming. 46 families from the Sebha district will participate in this training, which is organised in cooperation with a local NGO called the Fezzan Libyan Organisation. The last area where this project helps is construction of a local market place, where 100 unqualified persons from the local community and migrant community will be involved in construction, receiving food aid in exchange for their work. The project will continue until October 2021.

HEAR, HEAR. THE CZECH AMBASSADOR TO TUNISIA, JAN VYČÍTAL, AND THE DIRECTOR OF THE WFP IN LIBYA, SAMER ABDELJABER, HAVE JUST SIGNED THE GRANT AGREEMENT.



© MFA CR

PROMO: THESE WOMEN WILL SEW THE MOST BEAUTIFUL GARMENTS FOR YOU AFTER ATTENDING A SEWING COURSE IN THE CITY OF BENGHAZI.



© WFP



JOIN THIS LIBYAN WOMEN DURING THEIR COOKERY COURSE. YUMMY.

© WFP



© WFP

THIS CONSTRUCTION OF A MARKET PLACE IN THE TOWN OF UBARI IN SOUTH-WEST LIBYA IS HEADING THE RIGHT DIRECTION.

EGYPT, NIGER, MOROCCO, TUNISIA

SUPPORTING THE ASYLUM SYSTEMS OF THE COUNTRIES OF NORTH AFRICA

AMOUNT ALLOCATED: CZK 15 MILLION (EUR 600 000)

IMPLEMENTING PARTNER: EUROPEAN ASYLUM SUPPORT OFFICE (EASO)

IMPLEMENTATION PERIOD: NOVEMBER 2020 - OCTOBER 2022



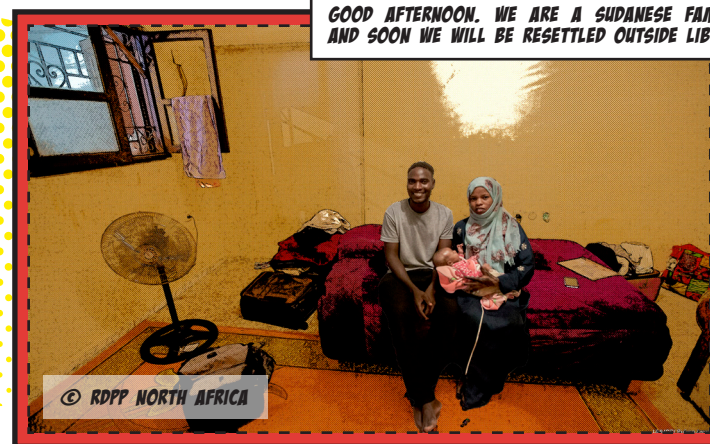
Project description:

The aim of the EASO two-year pilot project in North Africa is to support the asylum systems of states of North Africa. The project is implemented under the umbrella of the Regional Development and Protection Programme (RDPP) for North Africa, to which the Czech Republic has been contributing since 2015, and is financed equally by the Czech Republic and Denmark. In addition to the Czech Republic and Denmark, Belgium, Germany and the Netherlands contribute their expertise to the project.

The project focuses on the Central and Western Mediterranean routes, therefore implementation of activities covers a wide spectrum of states – Egypt, Niger (phase 1 of the project), Morocco and Tunisia (phase 2 of the project). The activities are directed at building national asylum and reception systems for the countries of North Africa by holding regional conferences, workshops, study visits and targeted trainings by national EASO experts. Additionally, the projects and activities of EU Member States and other organisations in North Africa and the overall situation and legislation relating to asylum in North African states are all mapped to facilitate the creation of so-called knowledge management for the implementation of future projects.

State of implementation:

Implementation of the project began in November 2020, when EASO appointed a project coordinator. Consultations took place in early 2021 with all of the participating EU Member States, the project management committee was set up and a fact finding trip to Egypt was organised in order to identify the Egyptian government's needs in terms of asylum and migration. More consultations and fact finding trips to other North African countries will follow with the aim of identifying specific project activities needed in each country and for regional interventions. This pilot project will run until October 2022.



MONITORING OF PROJECT IMPLEMENTATION

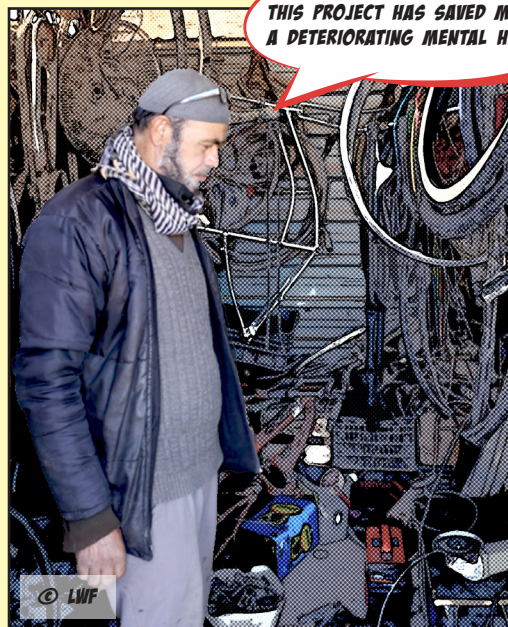
The Ministry of the Interior of the Czech Republic, in cooperation with Czech embassies, regularly monitors all projects supported by the Aid in Place Programme. The implementing partners submit to the Ministry of the Interior interim and final reports on the implementation of projects, including an overview of budget execution.

In addition, the coordinators of the Aid in Place Programme likewise carry out detailed monitoring of the activities and outputs of selected projects on the ground, in cooperation with the relevant embassies in the country and local partners. Unfortunately, the year 2020 was very specific in this respect and the measures taken against the spread of coronavirus by

the Czech Republic and partner countries made it impossible for coordinators to travel to the field where projects have been implemented. Therefore, monitoring took place remotely through monitoring reports and ongoing and frequent communication with implementation partners.

We are all the more pleased when the implementation partners inform us about the fate of the beneficiaries, even long after the end of the implementation of a project. Below we present Muntasir, a refugee from Syria, who received support under the Lutheran World Federation (LWF) project supported by Aid in Place in 2019.

Muntasir, 59, is a blacksmith by profession. In 2013, he was forced to leave his home in the Syrian city of Homs. He fled to safety with his family to Jordan and the Zaatari refugee camp became his new home. The beginnings in the new country were very difficult. In addition, in the course of 2020, measures in connection with the COVID-19 pandemic turned his already stabilized life upside down. Providing basic necessities for the family has become more challenging than ever. Muntasir struggled for his family's and his own survival, which resulted in his deteriorating mental health. During this challenging time, he was included in a project to support small business funded by Aid in Place and implemented by LWF. He was thus able to set up his own establishment in the Zaatari camp, where he offers repair services and the production of iron objects. Although the demand for his services decreased during the pandemic, he has been able to provide for his family. His monthly income is about 40 JOD, which equals about 1 200 CZK (EUR 48).



THE YEAR 2021

The priorities for 2021 are again intended to respond repeatedly and flexibly to the changing migration and refugee situation on the main migration routes into Europe.

Migration on the Western Balkans migration route rose by 78 % in 2020, despite the fact that arrivals to Greece via the Eastern Mediterranean migration route dropped by almost 80 %. A drop in migration on the Western Balkans route cannot be expected in 2021 either and so the first geographical priority for Aid in Place in 2021 remains the Balkans. The second priority is the Middle East which still has 5.4 million Syrian refugees in its territory. The living conditions of those and other refugees deteriorated in 2020 in consequence of the COVID-19 pandemic, which in 2021 might lead to increased risk of a rise in illegal migration and in refugees from the Middle East seeking refuge in European countries. In view of the fact that in 2020 the greatest numbers of refugees and migrants used the Central and Western Mediterranean migration routes, which are mainly used by inhabitants of sub-Saharan countries, the third geographical priority for 2021 is the wider Sahel region.

Apart from these priorities, cooperation with Morocco is planned for 2021, in the form of a financial contribution into the first pillar of the joint migration project of the Visegrád Four countries (V4) and Germany intended for border management. The project follows an agreement of the heads of governments of the V4 countries and Germany, and the Czech government resolution No. 922 of 14 September 2020.

The budget for the Aid in Place Programme for 2021 is CZK 140 million (EUR 5.6 million). The programme's priorities for 2021 were discussed at the inter-ministerial working group and approved by the Government of the Czech Republic by resolution No. 150 of 15 February 2021.

BALKANS

**CZK 50 MIL.
EUR 2 MIL.**

MIDDLE EAST

**CZK 25 MIL.
EUR 1 MIL.**

**WIDER SAHEL
REGION**

**CZK 25 MIL.
EUR 1 MIL.**

**JOINT PROJECT
OF V4 AND GERMANY
IN MOROCCO**

**CZK 25 MIL.
EUR 1 MIL.**

**RESOURCES FOR
EMERGENCIES**

**CZK 15 MIL.
EUR 600K**